

Todus



STARLING COLLECTION

STARLING COLLECTION
BY STUDIO SEGERS
IN ONE DAY



STARLING
LOW CHAIR
[67 x 69 x 69 cm]



STARLING
LOW ARMCHAIR
[67 x 69 x 69 cm]



LAZY MORNING TEA

AFTERNOON GET-TOGETHER
WITH FRIENDS



TIME TO RELAX ...





STARLING
CLUB CHAIR
[83 x 94 x 73 cm]



STARLING
OTTOMAN
[68 x 78 x 44 cm]



STARLING
COFFEE TABLES

EXPANDED STAINLESS STEEL
TABLE TOPS
S [Ø 44 x 47 cm]
M [Ø 58 x 35 cm]
L [Ø 73 x 23 cm]



STARLING
COFFEE TABLES

CERAMIC/HPL
TABLE TOPS
S [Ø 50 x 47 cm]
M [Ø 64 x 35 cm]
L [Ø 79 x 23 cm]



STARLING
TWO-SEATER SOFA
[83 x 154 x 73 cm]



STARLING
THREE-SEATER SOFA
[83 x 224 x 73 cm]



STARLING
CUSHIONS
[40 x 40 cm]



STARLING
COVER





ALL IS QUIET
FOR LATE
AFTERNOON
SIESTA



STARLING
LOUNGER
[80 x 165 x 83 cm]



STARLING
RECLINING LOUNGER
[77 x 203 x 30 cm]

TIME TO UNWIND
IN THE EVENING





STARLING
CHAIR
[57 x 60 x 78 cm]



STARLING
ARMCHAIR
[59 x 60 x 78 cm]



STARLING
HIGH CHAIR
[57 x 67 x 98 cm]



STARLING
BAR STOOL
[55 x 51 x 120 cm]



STARLING
BAR ARMCHAIR
[57 x 51 x 110 cm]

STARLING DINING TABLE

CERAMIC/HPL TABLE TOPS

[90 x 90 x 74 cm]
[100 x 100 x 74 cm]
[180 x 90 x 74 cm]
[220 x 100 x 74 cm]
[300 x 100 x 74 cm]

CONCRETE TABLE TOP

[220 x 100 x 74 cm]

STARLING BAR TABLE

CERAMIC/HPL

TABLE TOP
[90 x 90 x 110 cm]



MATERIALS

POWDER COATED STAINLESS STEEL FRAMES

100% polyester is used for powder coating.



FABRICS FOR SOFAS AND CUSHIONS

Crevin is a unique upholstery fabric for joint indoor outdoor use. It has a homely and natural appearance and can be easily cleaned by domestic machine-wash. It is finished with stain repellence. Sofa cushions are filled with Dryfeel® all weather foam.



HPL TABLE TOPS

High pressure laminate (HPL) is a flat thermo hardening resin-based sheet. It is reinforced with wood-based fibers and manufactured at high pressure and temperature.



CERAMIC TABLE TOPS

Ceramic is a 100% natural product. It does not contain any organic pigments and is thus resistant to UV rays, so it's perfectly colour stable. Ceramic as a material is highly abrasion resistant.



CONCRETE TABLE TOPS

Our concrete plates are reinforced with carbon fibres they are thus only a few milimeters thin and lighter than conventional plates. Their surface is finished with hybrid resin coating that ensures durability, scratch and stain resistance while preserving its natural look.



Todus



PURO COLLECTION



PURO COLLECTION
ARMCHAIR BY
ALEXANDER GUFLER



PURO ARMCHAIR
[56 x 54 x 87 cm]



PURO TABLE
[90 x 90 x 74 cm]
[100 x 100 x 74 cm]
[150 x 150 x 74 cm]



PURO
EXTENDABLE TABLE
[90 x 160/230 x 74 cm]
[100 x 160/240 x 74 cm]



MATERIALS

STAINLESS STEEL
FRAMES



BRUSHED
105

POWDER COATED STAINLESS STEEL FRAMES

100% polyester is used for powder coating.



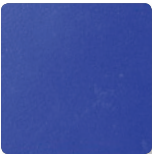
WHITE
110



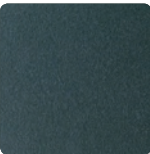
GREY
105



ANTHRACITE
145



BLUE
175



DARK GREEN
180

FABRIC FOR CHAIRS

Batylne is a technical fabric developed especially for outdoor use. It has exceptional tear strength, UV radiation resistance and dries very quickly.



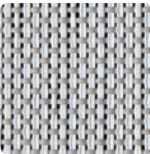
WHITE
510



BROWN/WHITE
525



GREY
535



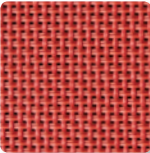
WHITE/GREY
540



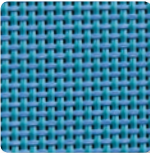
ANTHRACITE
545



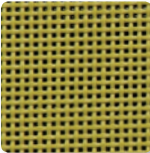
BLACK
550



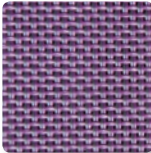
RED
570



BLUE
575



GREEN
580



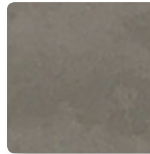
VIOLET
585

HPL TABLE TOPS

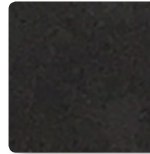
High pressure laminate (HPL) is a flat thermo hardening resin-based sheet. It is reinforced with wood-based fibers and manufactured at high pressure and temperature.



WHITE
310



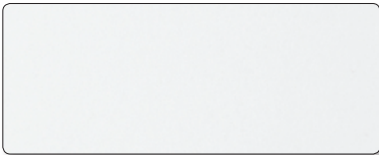
GREY
335



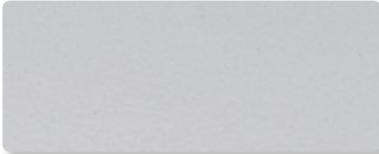
DARK GREY
336

CERAMIC TABLE TOPS

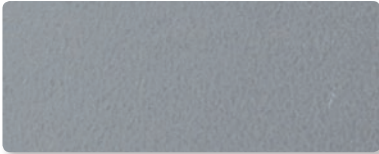
Ceramic is a 100% natural product. It does not contain any organic pigments and is thus resistant to UV rays, so it's perfectly colour stable. Ceramic as a material is highly abrasion resistant.



WHITE
210



PEARL
212



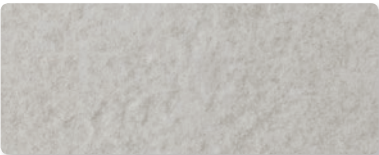
FUME
214



ANTHRACITE STONE
217



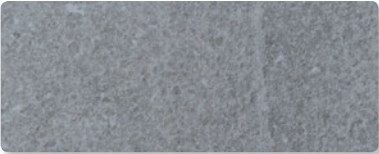
OXIDO BLACK
218



STONE IVORY
211



PEARL STONE
213



GREY STONE
215



BLACK
216

Todus



LEUVEN COLLECTION

LEUVEN COLLECTION
FITS IN EVERY
ENVIRONMENT

LEUVEN
LOUNGER
[65 x 200 x 32 cm]
STACKABLE
[76 x 200 x 32 cm]



LEUVEN
SUNBED
[142 x 200 x 32 cm]





LEUVEN DINING TABLE
[205 x 100 x 74 cm]
[280 x 100 x 74 cm]

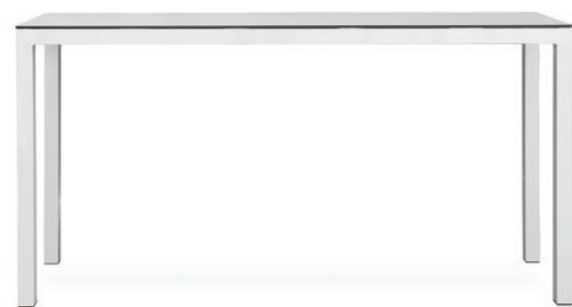


LEUVEN DINING BENCH
[205 x 40 x 45 cm]
[280 x 40 x 45 cm]



LEUVEN
SIDE TABLE
[50 x 50 x 32 cm]





LEUVEN
BAR TABLE
[205 x 60 x 110 cm]



LEUVEN
BAR BENCH
[105 x 40 x 79 cm]



LEUVEN
BAR STOOL
[40 x 40 x 79 cm]



MATERIALS

STAINLESS STEEL
FRAMES



BRUSHED
105

POWDER COATED ALUMINIUM FRAMES

100% polyester is used for powder coating.



WHITE
110



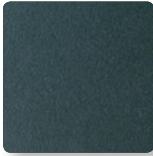
GREY
105



ANTHRACITE
145



BLUE
175



DARK GREEN
180

FABRIC FOR SUNLOUNGERS

Batylne is a technical fabric developed especially for outdoor use. It has exceptional tear strength, UV radiation resistance and dries very quickly.



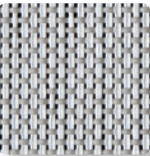
WHITE
510



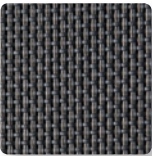
BROWN/WHITE
525



GREY
535



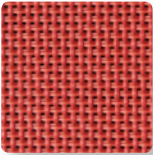
WHITE/GREY
540



ANTHRACITE
545



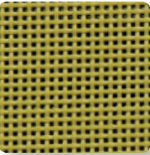
BLACK
550



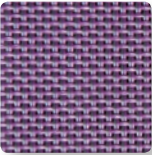
RED
570



BLUE
575



GREEN
580



VIOLET
585

FABRICS FOR SUNLOUNGER CUSHIONS

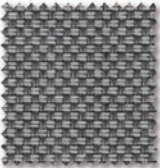
Crevin is a unique upholstery fabric for joint indoor outdoor use. It has a homely and natural appearance and can be easily cleaned by domestic machine-wash. It is finished with stain repellence. Sofa cushions are filled with Dryfeel® all weather foam.



WHITE
410



BROWN GREY
427



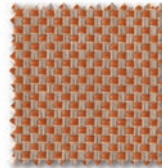
GREY
435



ANTHRACITE
445



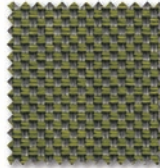
BLACK
450



ORANGE
424



DARK BLUE
479



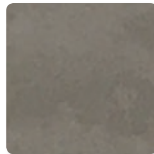
GREEN
480

HPL TABLE TOPS

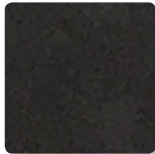
High pressure laminate (HPL) is a flat thermo hardening resin-based sheet. It is reinforced with wood-based fibers and manufactured at high pressure and temperature.



WHITE
310

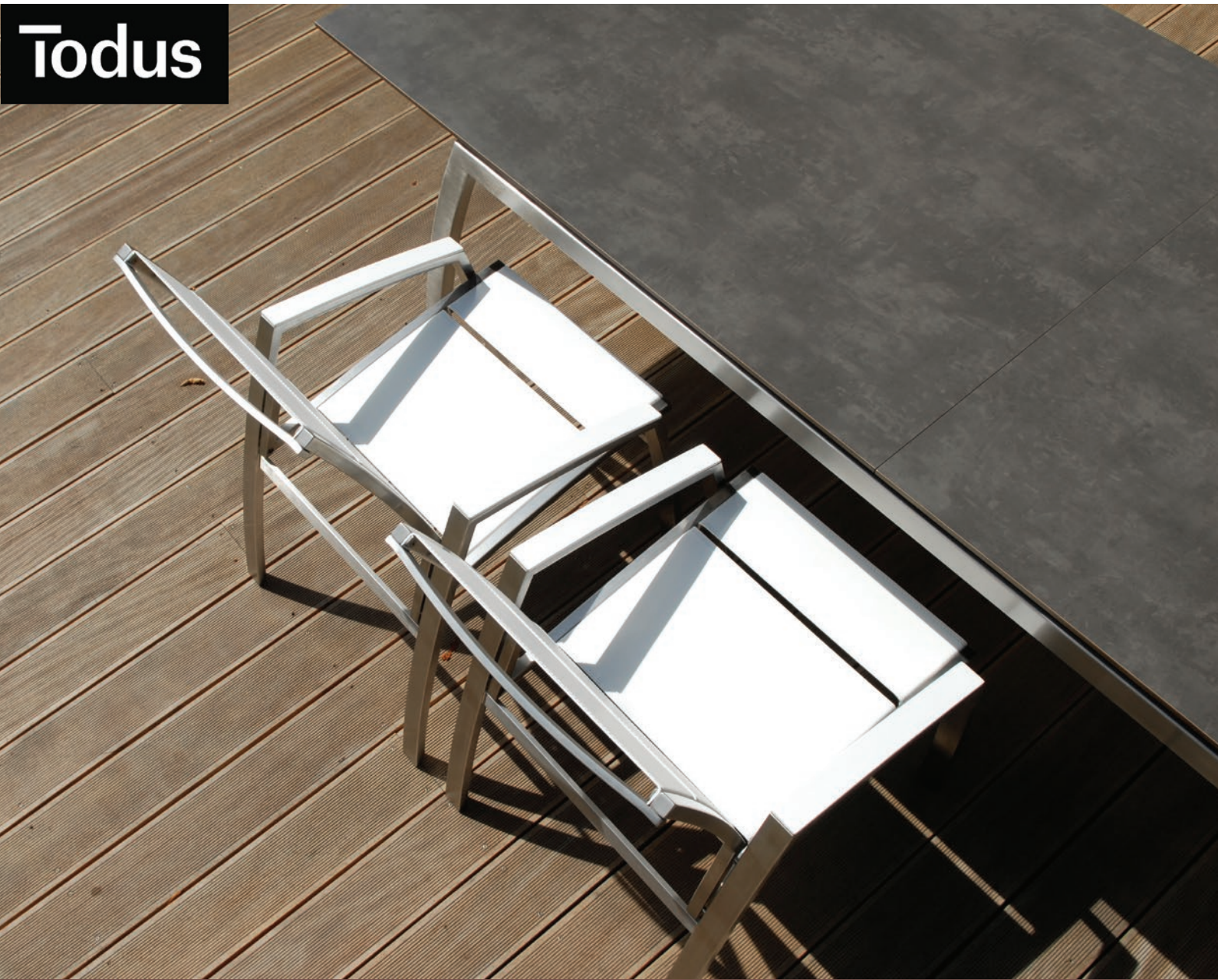


GREY
335



DARK GREY
336

Todus



ALCEDO COLLECTION

ALCEDO COLLECTION
BY JIŘÍ ŠPANIHEL



ALCEDO
ARMCHAIR
[55 x 65 x 94 cm]



ALCEDO
ARMCHAIR IN VINYL
[55 x 66 x 94 cm]



ALCEDO
DINING ARMCHAIR
[55 x 64 x 88 cm]

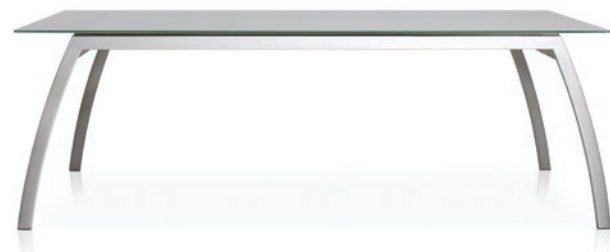


ALCEDO
WIDE ARMCHAIR
[60 x 66 x 94 cm]





ALCEDO
FORNIX TABLE
[100 x 220 x 74 cm]
[100 x 280 x 74 cm]



ALCEDO
FORNIX EXTENDABLE TABLE
[100 x 260/335 x 74 cm]



ALCEDO
FORNIX II TABLE
[100 x 200 x 74 cm]
[100 x 260 x 74 cm]



ALCEDO
FORNIX II EXTENDABLE TABLE
[100 x 220/270/320 x 74cm]



ALCEDO
ARIA TABLE
[90 x 90 x 74 cm]
[100 x 100 x 74 cm]

[90 x 160 x 74 cm]
[90 x 200 x 74 cm]
[90 x 240 x 74 cm]
[100 x 160 x 74 cm]
[100 x 200 x 74 cm]
[100 x 240 x 74 cm]





ALCEDO
CLUB CHAIR
[67 x 78 x 87 cm]



ALCEDO
SIDE TABLE
[50 x 50 x 35 cm]
WITH FRAME
[53 x 53 x 35 cm]



ALCEDO
LOW ARMCHAIR
[64 x 102 x 93 cm]

FOOTREST
[59 x 64 x 36 cm]



ALCEDO
LOW ARMCHAIR
ELASTIC BELTS
[64 x 103 x 90 cm]

FOOTREST
[58 x 64 x 38 cm]

ALCEDO
LOUNGER
[63 x 195 x 43 cm]



ALCEDO
LOUNGER
ELASTIC BELTS
[63 x 184 x 44 cm]





ALCEDO SOFA
CLUB ARMCHAIR
[90 x 90 x 83 cm]



ALCEDO SOFA
TWO-SEATER
[170 x 90 x 83 cm]



ALCEDO SOFA
THREE-SEATER
[250 x 90 x 83 cm]



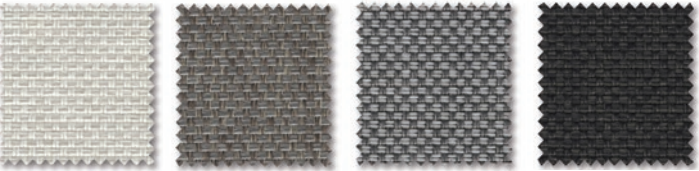
ALCEDO SOFA
COFFEE TABLE
[90 x 90 x 29 cm]



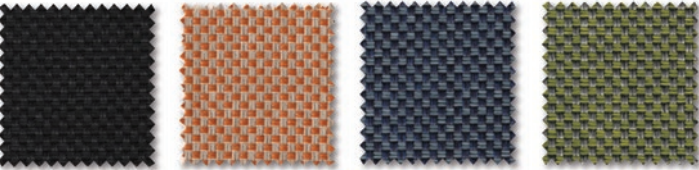
ALCEDO
ARIA COFFEE TABLE
[60 x 90 x 37 cm]
[80 x 80 x 37 cm]
[90 x 90 x 37 cm]

MATERIALS

FABRICS FOR SOFAS AND CUSHIONS - CREVIN
Crevin is a unique upholstery fabric for joint indoor outdoor use. It has a homely and natural appearance and can be easily cleaned by domestic machine-wash. It is finished with stain repellence. Sofa cushions are filled with Dryfeel® all weather foam.

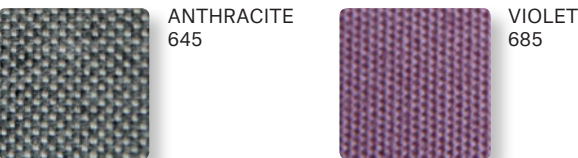
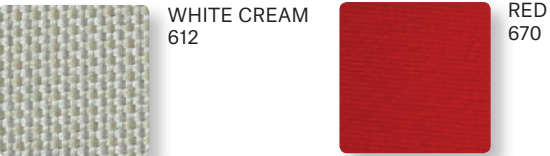
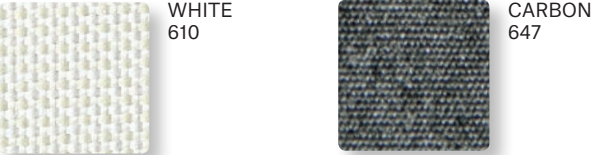


WHITE 410 BROWN GREY 427 GREY 435 ANTHRACITE 445

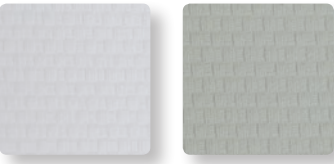


BLACK 450 ORANGE 424 DARK BLUE 479 GREEN 480

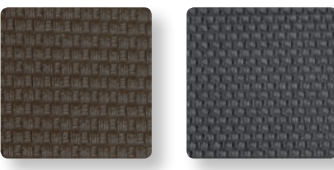
FABRICS FOR SOFAS AND CUSHIONS - SUNBRELLA®
Sunbrella® is a fabric made of solution dyed acrylic. It is water repellent and stain resistant. It has a soft natural feel and touch. Sofa cushions are filled with Dryfeel® all weather foam.



VINYL FOR CHAIRS AND SOFAS
SKAI® vinyl simulated leather on PVC base. It is UV and water resistant.

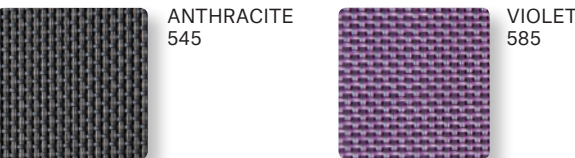
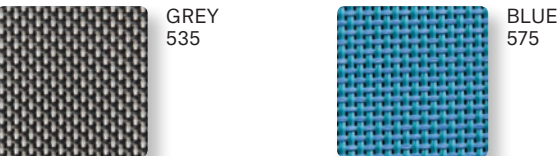


WHITE 710 LIGHT GREY 711



CHOCO 720 BLACK 750

FABRIC FOR CHAIRS AND SUNLOUNGERS
Batyline is a technical fabric developed especially for outdoor use. It has exceptional tear strength, UV radiation resistance and dries very quickly.



STAINLESS STEEL
FRAMES



BRUSHED 105



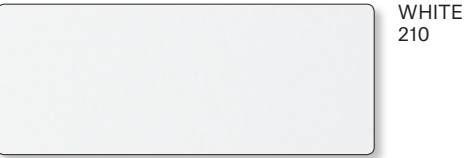
DECO CUSHIONS
[40 x 40 cm]
[40 x 60 cm]
[60 x 60 cm]

HPL TABLE TOPS
High pressure laminate (HPL) is a flat thermo hardening resin-based sheet. It is reinforced with wood-based fibers and manufactured at high pressure and temperature.

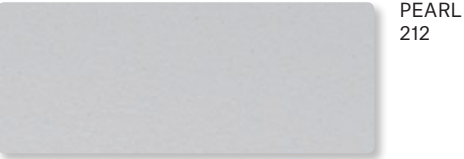


WHITE 310 GREY 335 DARK GREY 336

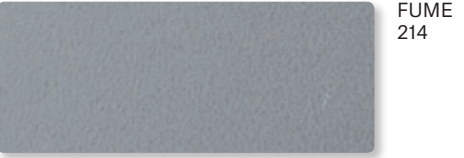
CERAMIC TABLE TOPS
Ceramic is a 100% natural product. It does not contain any organic pigments and is thus resistant to UV rays, so it's perfectly colour stable. Ceramic as a material is highly abrasion resistant.



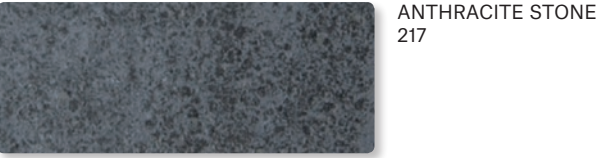
WHITE 210



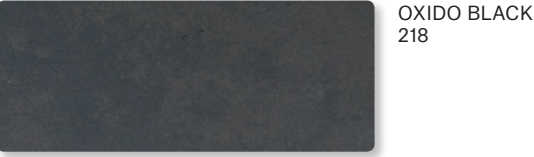
PEARL 212



FUME 214



ANTHRACITE STONE 217



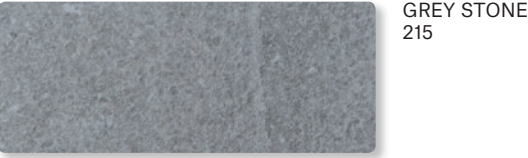
OXIDO BLACK 218



STONE IVORY 211



PEARL STONE 213



GREY STONE 215



BLACK 216

Todus



LOTOS MODULAR SOFA



LOTOS MODULAR SOFA
BY JIŘÍ ŠPANIHEL

CREATE
YOUR OWN
DESIGN



LOTOS
OTTOMAN
[80 x 80 x 35 cm]



LOTOS
CENTRE UNIT
[80 x 100 x 65 cm]



LOTOS
CORNER UNIT
[100 x 100 x 65 cm]



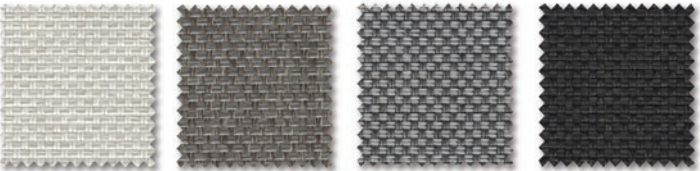
LOTOS
CLUB CHAIR
[120 x 100 x 65 cm]



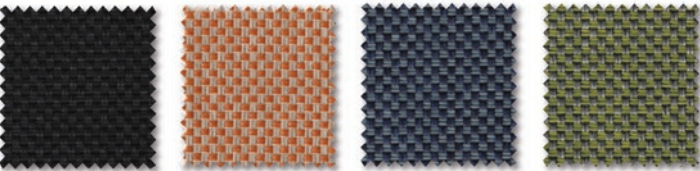
MATERIALS

FABRICS - CREVIN

Crevin is a unique upholstery fabric for joint indoor outdoor use. It has a homely and natural appearance and can be easily cleaned by domestic machine-wash. It is finished with stain repellence. Sofa cushions are filled with Dryfeel® all weather foam.



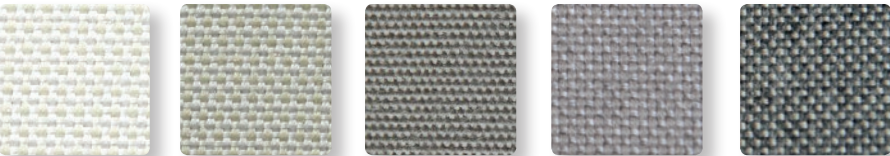
WHITE 410 BROWN GREY 427 GREY 435 ANTHRACITE 445



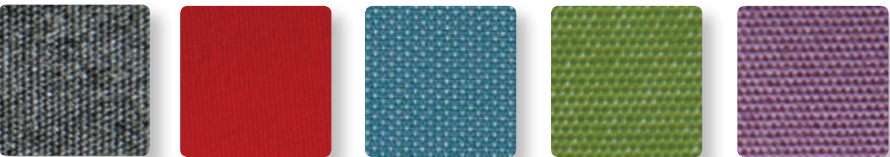
BLACK 450 ORANGE 424 DARK BLUE 479 GREEN 480

FABRICS - SUNBRELLA®

Sunbrella® is a fabric made of solution dyed acrylic. It is water repellent and stain resistant. It has a soft natural feel and touch. Sofa cushions are filled with Dryfeel® all weather foam.



WHITE 610 WHITE CREAM 612 TAUPE 617 NATURE GREY 632 ANTHRACITE 645



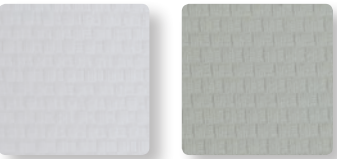
CARBON 647 RED 670 BLUE 675 GREEN 680 VIOLET 685



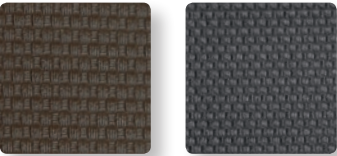
DECO CUSHIONS
[40 x 40 cm]
[40 x 60 cm]
[60 x 60 cm]

VINYL

SKAI® vinyl simulated leather on PVC base. It is UV and water resistant.



WHITE 710 LIGHT GREY 711



CHOCO 720 BLACK 750



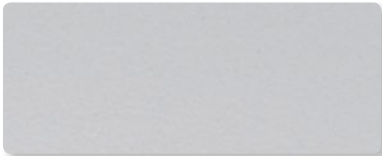
PURO
COFFEE TABLE
[90 x 90 x 29 cm]
[100 x 50 x 29 cm]
[110 x 70 x 29 cm]

CERAMIC TABLE TOPS

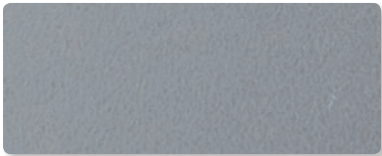
Ceramic is a 100% natural product. It does not contain any organic pigments and is thus resistant to UV rays, so it's perfectly colour stable. Ceramic as a material is highly abrasion resistant.



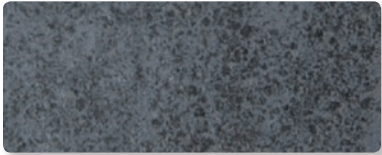
WHITE 210



PEARL 212



FUME 214



ANTHRACITE STONE 217



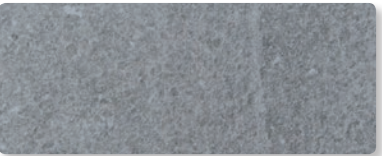
OXIDO BLACK 218



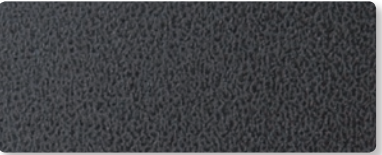
STONE IVORY 211



PEARL STONE 213



GREY STONE 215



BLACK 216

HPL TABLE TOPS

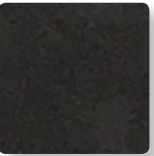
High pressure laminate (HPL) is a flat thermo hardening resin-based sheet. It is reinforced with wood-based fibers and manufactured at high pressure and temperature.



WHITE 310



GREY 335



DARK GREY 336

